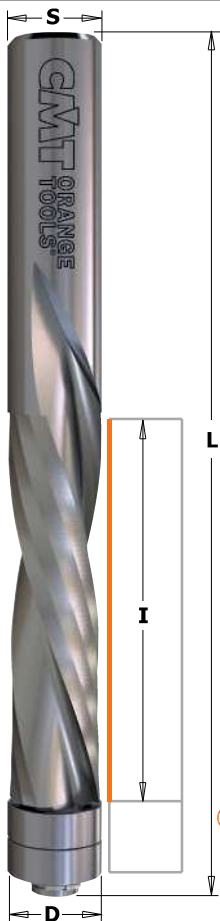
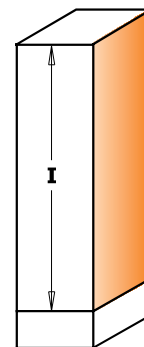
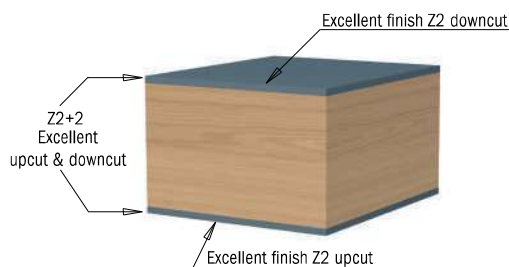
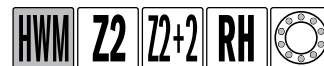


# Double-Bearing Spiral Flush Trim Bits



## 190B - 191B - 192B

CMT solid carbide spiral flush trim bits are composed of a special super-micrograin formulation increasing hardness with a higher transverse rupture point. Combined with a spiral cutting angle, CMT solid carbide spiral flush trim bits equipped with a double bearing, allow cabinet makers to shear wood and wood products cleanly, providing more efficient chip ejection than standard flush trim bits. In production settings, this means these bits will run cooler, stay sharper, last longer and increase shop productivity.



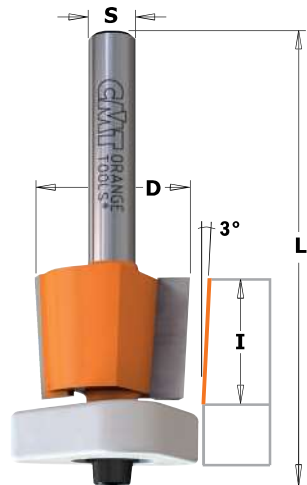
Drawing is 1:1 scale

I mm	D mm	L mm		ORDER NO. S=Ø6mm	ORDER NO. S=Ø6,35mm	ORDER NO. S=Ø12mm	ORDER NO. S=Ø12,7mm
<b>Z2+2 Upcut &amp; Downcut</b>							
47	12,7	114	10			190.127.11B	190.508.11B
<b>Z2 Upcut</b>							
25,4	6,35	76,2	10	191.064.11B	191.008.11B		
31,7	12,7	89	10				191.505.11B
50,8	12,7	114	10			191.127.11B	191.507.11B
<b>Z2 Downcut</b>							
25,4	6,35	76,2	10		192.008.11B		
31,7	12,7	89	10				192.505.11B
50,8	12,7	114	10			192.127.11B	192.507.11B

Spare parts

791.010.00		541.301.00
791.035.00	541.009.00	
791.010.00		541.301.00
791.010.00		541.301.00
791.035.00	541.009.00	
791.010.00		541.301.00
791.010.00		541.301.00

# 3-in-1 Flush Trim Bits for MDF/Laminate

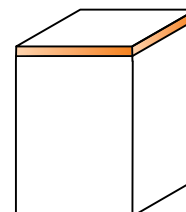


## 7/8/907

3 in 1 new flush trim bits with DELRIN® Triangular bearings are your best partner for laminate trimming. In fact, it solves three of the most common problems that occur when flush trimming:

- 1) The anti-stick properties of the DELRIN® bearing greatly reduces the likelihood of freezing of the bearing from glue.
- 2) The extended guide surface of the new DELRIN® bearing will perfectly match the work surface without scratching like a steel bearing would. The DELRIN® bearing also guarantees maximum stability.
- 3) The shear angle cutting edge reduces the need for filing. 3-in-1 bits are ideal on plastic laminates as well as aluminium laminates!

3-in-1 bits are ideal on plastic laminates as well as aluminium laminates!



Drawing is 1:1 scale

**NON BLOCKING**



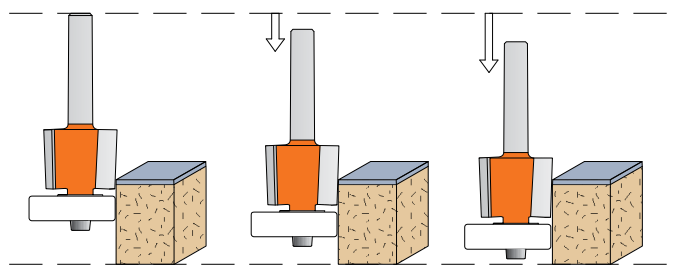
Patent No. D628,218

- Extended guide surface
- Non-freezing
- Non-scratch surface



### Perfect trimming with conical edges!

Thanks to the innovative conical edges of this bit, you will always get perfect cuts even after re-sharpening. In fact, the most common problem you have with standard flush trim bits is the undersized diameter after re-sharpening which leaves a mark on the material; with the new CMT construction you could re-sharpen up to six times without any problem. Just remember to adjust your bit up or down as per the illustration.



I mm	D mm	L mm		ORDER NO. S=Ø6mm	ORDER NO. S=Ø6,35mm	ORDER NO. S=Ø8mm	ORDER NO. S=Ø12,7mm
12,7	12,7	54,2	10	707.128.11	807.128.11	907.128.11	
15,87	19	59,3	10	707.190.11	807.190.11	907.190.11	
15,87	19	65,7	10				807.690.11

Spare parts

990.422.00	791.042.00	990.058.00	991.057.00
990.423.00	791.043.00	990.058.00	991.057.00
990.423.00	791.043.00	990.058.00	991.057.00