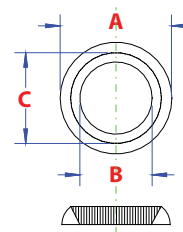


CUP WASHER
KRAALRING
CUVETTE POUR VIS
HOHLSCHEIBE



| | | | |
|-------------------------|----------------------------|-------------------------|----------------------------|
| material : Brass | materiaal : Messing | matière : Laiton | Werkstoff : Messing |
| type : standard | type : standaard | type : standard | Typ : normalmass |
| surface : plain | oppervlak : blank | surface : brut | Oberfläche : roh |

Technical properties | Technische gegevens | Données techniques | Technische Daten

| N | OLD CODE | NEW CODE | EAN | BOX | a | b | c |
|----|-------------|----------------|---------------|-----|----|---|-----|
| 17 | 00CUV,17 MS | 000CUVMS001703 | 5410439092609 | 200 | 9 | 3 | 6 |
| 19 | 00CUV,19 MS | 000CUVMS001903 | 5410439092623 | 200 | 11 | 4 | 7,8 |
| 20 | 00CUV,20 MS | 000CUVMS002003 | 5410439092630 | 200 | 13 | 5 | 9,6 |



| | | | |
|--------------------------------|-------------------------------|--------------------------|--------------------------------|
| material : Brass | materiaal : Messing | matière : Laiton | Werkstoff : Messing |
| type : standard | type : standaard | type : standard | Typ : normalmass |
| surface : nickel plated | oppervlak : vernikkeld | surface : nickelé | Oberfläche : vernickelt |

Technical properties | Technische gegevens | Données techniques | Technische Daten

| N | OLD CODE | NEW CODE | EAN | BOX | a | b | c |
|----|-------------|----------------|---------------|-----|----|-----|------|
| 17 | 00CUV,17 MN | 000CUVMN001703 | 5410439305891 | 200 | 9 | 3 | 6 |
| 19 | 00CUV,19 MN | 000CUVMN001903 | 5410439305617 | 200 | 11 | 4 | 7,8 |
| 20 | 00CUV,20 MN | 000CUVMN002003 | 5410439305877 | 200 | 13 | 5 | 9,6 |
| 22 | 00CUV,22 MN | 000CUVMN002203 | 5410439305884 | 200 | 15 | 5,5 | 11,5 |
| 23 | 00CUV,23 MN | 000CUVMN002303 | 5410439306508 | 200 | 16 | 7 | 12,2 |