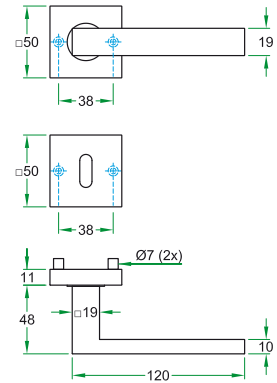
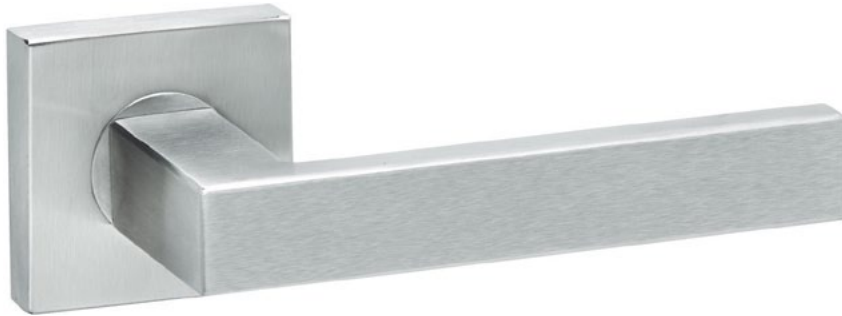


Metro



- Kunststof onderconstructie met veer.
- RVS mat geborsteld.
- Vierkantrozet 50 x 50 x 11 mm.



- Sous-construction en nylon avec ressort.
- Inox mat brossé.
- Rosace carré 50 x 50 x 11 mm.



- Kunststoff Unterkonstruktion mit Feder.
- Edelstahl matt gebürstet.
- Quadrat Rosette 50 x 50 x 11 mm.



- Nylon understructure with spring.
- Brushed stainless steel.
- Square rose 50 x 50 x 11 mm.

Metro

			03246
			03241
			03242
			03243