

CN565S2(CE)

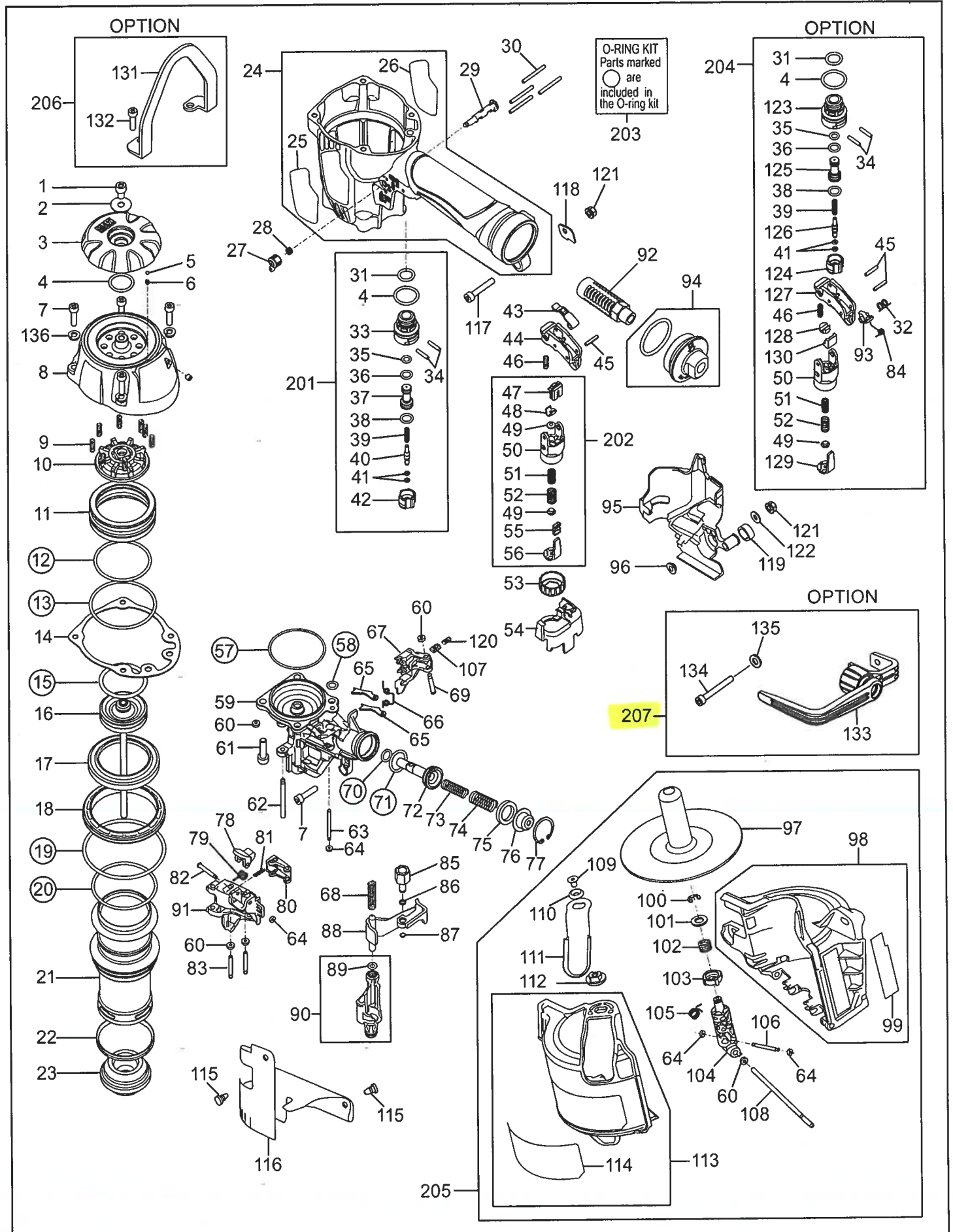
EXPLODED
VIEW AND SPARE
PARTS LIST

EINZELTEILDAR-
STELLUNG UND
ERSATZEILLISTE

SCHEMA ECLATE ET
LISTE DES PIÈCES
DE RECHANGE

ESPLOSO DEI
COMPONENTI DE
ELENCO DELLE
PARTI DI RICAMBIO

DESPIECE DE LA
MAQUINA Y LISTA
DE RECAMBIOS



	ITEMCODE	MAX CN565S2			
1	CN38235	HEXAGON SOCKET HEAD CAP SCREW M6X10 MEC	72	CN38248	FEED PISTON
2	CN38236	PLAIN WASHER 6.5X20X1	73	CN38308	COMPRESSION SPRING 8308
3	CN38237	EXHAUST COVER	74	CN38016	COMPRESSION SPRING 8016
4	KN12644	O-RING 1AP20	75	CN37998	FEED PISTON STOP
5	CN38141	STEEL BALL 3 CLASS60	76	CN37995	SPRING COLLER
6	CN38292	COMPRESSION SPRING 8292	77	CN38012	C-TYPE RETAINING RING (INTERNAL)24 SUS
7	CN38288	HEXAGON SOCKET HEAD CAP SCREW M5X20	78	CN33679	DOOR LATCH
8	CN81290	CYLINDER CAP UNIT	79	CN38127	TORSION SPRING 8127
9	CN38241	COMPRESSION SPRING 8241	80	CN38294	RATCHET A
10	CN38243	PISTON STOP	81	CN38295	COMPRESSION SPRING 8295
11	CN38242	HEAD VALVE PISTON	82	FF41599	STEP PIN 1599
12	CN38284	O-RING AS568-136	83	CN38250	STRAIGHT PIN 8250
13	KN12645	O-RING AS568-142	84	KK33247	TORSION SPRING 3247
14	CN38269	CYLINDER CAP SEAL	85	CN38260	CONTACT BOLT
15	CN38226	O-RING 1BP40	86	CN37992	O-RING 1A 1.2X4
16	CN81266	MAIN PISTON UNIT	87	CN38289	ADJUST STOPPER
17	CN38234	CYLINDER SEAL	88	CN81272	CONTACT ARM B UNIT
18	CN38233	CYLINDER RING	89	CN38282	O-RING 1B P5
19	CN38005	O-RING 1A G75	90	CN81298	CONTACT NOSE ASSY (AFTER)
20	CN38281	O-RING AS568-141	91	CN38249	DOOR
21	CN38232	CYLINDER	92	CN38285	END CAP FILTER
22	CN37991	CHECK VALVE	93	TA16138	ST LEVER
23	CN38272	BUMPER	94	CN81224	END CAP ASSY
24	CN81294	BODY ASSY	95	CN38273	ARM COVER
25	CN38230	NAME PLATE A	96	CN38302	COLLAR
26	CN38231	NAME PLATE B	97	CN38159	NAIL SUPPORT
27	KN12621	TRIGGER LOCK DIAL	98	CN81292	MAGAZINE (AFTER)
28	KK23507	COMPRESSION SPRING 3507	99	CN38293	NAILSUPPORT SWITCH LABEL
29	KN12622	TRIGGER LOCK LEVER	100	CN38165	RETAINING RINGS 6
30	FF21235	SPRING PIN 3X30	101	CN38161	PLANE WASHER 8
31	KN12643	O-RING 1AP12	102	CN38164	COMPRESSION SPRING 8164
32	KK33144	TORSION SPRING 3144	103	CN38163	BASE DIAL
33	CN33909	TRIGGER VALVE HOUSING	104	HN12057	NAIL POST
34	KN12660	PARALLEL PIN 2660	105	HN12099	TORSION SPRING 2099
35	KN12642	O-RING 1AP6	106	CN38168	STRAIGHT PIN (NAIL POST)
36	HH11209	O-RING TYPE 1B P7	107	CN38307	COMPRESSION SPRING 8307
37	CN33627	PILOT VALVE	108	HN12098	STRAIGHT PIN(MAGAZINE HINGE)
38	KN12641	O-RING 1AP9	109	HN12079	HEXAGON SOCKET COUNTERSUNK HEAD SCREW 5X8
39	KK24123	COMPRESSION SPRING 4123	110	HN12081	COUNTERSUNK WASHER 5
40	CN35128	TRIGGER VALVE STEM	111	HN12062	PRESSER
41	KN12647	O-RING 1B 1.4X2.5	112	HN12063	PRESSER NUT
42	CN33910	TRIGGER VALVE CAP	113	CN81296	MAGAZINE CAP CE (AFTER)
43	CN35115	CONTACT LEVER	114	CN38176	WARNING LABEL(CE)
44	CN35001	TRIGGER	115	CN31083	HOUSING COVER FIXTURE
45	FF22402	WAVE SPRING PIN 3*16	116	CN38270	DUST COVER
46	KK23129	COMPRESSION SPRING3129	117	KN12671	HEXAGON SOCKET HEAD CAP SCREW M5X28
47	CN35656	DIFFERENTIAL SWITCH LEVER	118	CN38311	PLATE
48	HN10786	ARM GUIDE PLATE	119	CN38271	CONTACT TOP
49	HN10785	CONTACT BUMPER	120	CN38309	COMPRESSION SPRING 8309
50	CN38263	ARM GUIDE	121	CN38310	HEXAGON NUT WITH FLANGE M5
51	KK23735	COMPRESSION SPRING 3735	122	KN12619	PLAIN WASHER 5.1X12X1.2
52	KK23736	COMPRESSION SPRING 3736	123	CN31323	TRIGGER VALVE HOUSING
53	CN38313	ADJUST DIAL	124	CN31346	TRIGGER VALVE CAP
54	CN38277	ADJUST SPACER	125	CN33627	PILOT VALVE
55	CN38099	SWITCH SPRING	126	CN33723	TRIGGER VALVE STEM
56	CN38265	CONTACT ARM A	127	CN35714	TRIGGER
57	CN38283	O-RING AS568-033	128	CN38299	ARMGUIDE PIN
58	CN38279	O-RING 1AP7	129	CN38300	CONTACT ARM A(ST)
59	CN38245	NOSE	130	CN38301	CONTACT ARM A GUIDE
60	EE39602	WASHER 7	131	CN38312	BODY HANGER
61	BB40413	BOLT 6X22	132	BB40405	BOLT 5X25
62	CN38246	STRAIGHT PIN 8246	133	HN70292	HOOK ASSY
63	CN38297	STRAIGHT PIN 8297	134	BB40492	T-BOLT 5X42
64	EE39609	PLANE RUBBER WASHER 1.8X6X2	135	EE39172	WASHER 5.1X12X1.2
65	CN38296	CHECK PAWL	201	CN81287	TRIGGER VALVE KIT CN565S2
66	CN38298	TORSION COIL SPRING 8298	202	CN81288	ARM GUIDE KIT CN565S2
67	CN38247	FEED PAWL	203	CN81286	O-RING KIT CN565S2
68	CN38276	COMPRESSION SPRING 8276	204	CN81289	ST KIT CN565S2
69	CN38286	STEP PIN 8286	205	CN81297	MAGAZINE ASSY CE (AFTER)
70	KN12641	O-RING 1AP9	206	CN81300	BODY HANGER KIT CN565S2
71	CN38000	O-RING 1A P18	207	CN81301	HOOK KIT(CN565S2)

ITEMCODE		MAX CN565S2			
1	CN38235	HEXAGON SOCKET HEAD CAP SCREW M6X10 MEC	72	CN38248	FEED PISTON
2	CN38236	PLAIN WASHER 6.5X20X1	73	CN38308	COMPRESSION SPRING 8308
3	CN38237	EXHAUST COVER	74	CN38016	COMPRESSION SPRING 8016
4	KN12644	O-RING 1AP20	75	CN37998	FEED PISTON STOP
5	CN38141	STEEL BALL 3 CLASS60	76	CN37995	SPRING COLLER
6	CN38292	COMPRESSION SPRING 8292	77	CN38012	C-TYPE RETAINING RING (INTERNAL)24 SUS
7	CN38288	HEXAGON SOCKET HEAD CAP SCREW M5X20	78	CN33679	DOOR LATCH
8	CN81290	CYLINDER CAP UNIT	79	CN38127	TORSION SPRING 8127
9	CN38241	COMPRESSION SPRING 8241	80	CN38294	RATCHET A
10	CN38243	PISTON STOP	81	CN38295	COMPRESSION SPRING 8295
11	CN38242	HEAD VALVE PISTON	82	FF41599	STEP PIN 1599
12	CN38284	O-RING AS568-136	83	CN38250	STRAIGHT PIN 8250
13	KN12645	O-RING AS568-142	84	KK33247	TORSION SPRING 3247
14	CN38269	CYLINDER CAP SEAL	85	CN38260	CONTACT BOLT
15	CN38226	O-RING 1BP40	86	CN37992	O-RING 1A 1.2X4
16	CN81266	MAIN PISTON UNIT	87	CN38289	ADJUST STOPPER
17	CN38234	CYLINDER SEAL	88	CN81272	CONTACT ARM B UNIT
18	CN38233	CYLINDER RING	89	CN38282	O-RING 1B P5
19	CN38005	O-RING 1A G75	90	CN81298	CONTACT NOSE ASSY (AFTER)
20	CN38281	O-RING AS568-141	91	CN38249	DOOR
21	CN38232	CYLINDER	92	CN38285	END CAP FILTER
22	CN37991	CHECK VALVE	93	TA16138	ST LEVER
23	CN38272	BUMPER	94	CN81224	END CAP ASSY
24	CN81294	BODY ASSY	95	CN38273	ARM COVER
25	CN38230	NAME PLATE A	96	CN38302	COLLAR
26	CN38231	NAME PLATE B	97	CN38159	NAIL SUPPORT
27	KN12621	TRIGGER LOCK DIAL	98	CN81292	MAGAZINE (AFTER)
28	KK23507	COMPRESSION SPRING 3507	99	CN38293	NAILSUPPORT SWITCH LABEL
29	KN12622	TRIGGER LOCK LEVER	100	CN38165	RETAINING RINGS 6
30	FF21235	SPRING PIN 3X30	101	CN38161	PLANE WASHER 8
31	KN12643	O-RING 1AP12	102	CN38164	COMPRESSION SPRING 8164
32	KK33144	TORSION SPRING 3144	103	CN38163	BASE DIAL
33	CN33909	TRIGGER VALVE HOUSING	104	HN12057	NAIL POST
34	KN12660	PARALLEL PIN 2660	105	HN12099	TORSION SPRING 2099
35	KN12642	O-RING 1AP6	106	CN38168	STRAIGHT PIN (NAIL POST)
36	HH11209	O-RING TYPE 1B P7	107	CN38307	COMPRESSION SPRING 8307
37	CN33627	PILOT VALVE	108	HN12098	STRAIGHT PIN(MAGAZINE HINGE)
38	KN12641	O-RING 1AP9	109	HN12079	HEXAGON SOCKET COUNTERSUNK HEAD SCREW 5X8
39	KK24123	COMPRESSION SPRING 4123	110	HN12081	COUNTERSUNK WASHER 5
40	CN35128	TRIGGER VALVE STEM	111	HN12062	PRESSER
41	KN12647	O-RING 1B 1.4X2.5	112	HN12063	PRESSER NUT
42	CN33910	TRIGGER VALVE CAP	113	CN81296	MAGAZINE CAP CE (AFTER)
43	CN35115	CONTACT LEVER	114	CN38176	WARNING LABEL(CE)
44	CN35001	TRIGGER	115	CN31083	HOUSING COVER FIXTURE
45	FF22402	WAVE SPRING PIN 3*16	116	CN38270	DUST COVER
46	KK23129	COMPRESSION SPRING3129	117	KN12671	HEXAGON SOCKET HEAD CAP SCREW M5X28
47	CN35656	DIFFERENTIAL SWITCH LEVER	118	CN38311	PLATE
48	HN10786	ARM GUIDE PLATE	119	CN38271	CONTACT TOP
49	HN10785	CONTACT BUMPER	120	CN38309	COMPRESSION SPRING 8309
50	CN38263	ARM GUIDE	121	CN38310	HEXAGON NUT WITH FLANGE M5
51	KK23735	COMPRESSION SPRING 3735	122	KN12619	PLAIN WASHER 5.1X12X1.2
52	KK23736	COMPRESSION SPRING 3736	123	CN31323	TRIGGER VALVE HOUSING
53	CN38313	ADJUST DIAL	124	CN31346	TRIGGER VALVE CAP
54	CN38277	ADJUST SPACER	125	CN33627	PILOT VALVE
55	CN38099	SWITCH SPRING	126	CN33723	TRIGGER VALVE STEM
56	CN38265	CONTACT ARM A	127	CN35714	TRIGGER
57	CN38283	O-RING AS568-033	128	CN38299	ARMGUIDE PIN
58	CN38279	O-RING 1AP7	129	CN38300	CONTACT ARM A(ST)
59	CN38245	NOSE	130	CN38301	CONTACT ARM A GUIDE
60	EE39602	WASHER 7	131	CN38312	BODY HANGER
61	BB40413	BOLT 6X22	132	BB40405	BOLT 5X25
62	CN38246	STRAIGHT PIN 8246	133	HN70292	HOOK ASSY
63	CN38297	STRAIGHT PIN 8297	134	BB40492	T-BOLT 5X42
64	EE39609	PLANE RUBBER WASHER 1.8X6X2	135	EE39172	WASHER 5.1X12X1.2
65	CN38296	CHECK PAWL	201	CN81287	TRIGGER VALVE KIT CN565S2
66	CN38298	TORSION COIL SPRING 8298	202	CN81288	ARM GUIDE KIT CN565S2
67	CN38247	FEED PAWL	203	CN81286	O-RING KIT CN565S2
68	CN38276	COMPRESSION SPRING 8276	204	CN81289	ST KIT CN565S2
69	CN38286	STEP PIN 8286	205	CN81297	MAGAZINE ASSY CE (AFTER)
70	KN12641	O-RING 1AP9	206	CN81300	BODY HANGER KIT CN565S2
71	CN38000	O-RING 1A P18	207	CN81301	HOOK KIT(CN565S2)